



Do more with ultrasound.

Increased Diagnostic Confidence Earlier in the Care Path

CASE STUDY | **KNEE**



**KONICA MINOLTA**



**Better clinical outcomes.**

**Improved efficiencies.**

**Increased patient satisfaction.**

Increased diagnostic confidence earlier in the care path has real clinical and economic value, supporting your practice initiatives toward better clinical outcomes and improved patient satisfaction. Konica Minolta Healthcare's SONIMAGE® HS1 Compact Ultrasound System allows you to make diagnoses that you simply couldn't before and provides treatment more confidently at the point-of-care.

Point-of-care MSK ultrasound is a cost effective, portable imaging modality which provides scans of superficial and deep structures, pinpointing where patients are experiencing symptoms. The advanced imaging capability of the HS1 System makes it possible to diagnose patients in the office, without resorting to other more expensive and time-consuming imaging modalities.

Konica Minolta Healthcare is proud to be a leader in providing MSK professionals and the global medical community with the latest innovative ultrasound solutions for point-of-care environments.



## Symptoms

# Meet Kate.

Always active and full of energy, Kate visited her MSK specialist after experiencing increased knee pain. Her symptoms included swelling, redness and warmth over the patellar tendon region.

She felt the pain mostly when running, climbing stairs and bending her knee at 90 degrees of inflection, preventing her from participating fully in her daily activities. Kate suffered with the pain for over a year with no history of injury.



Increase patient satisfaction with ultrasound,  
a bedside imaging modality.



## Evaluation

The physician first performed a visual and physical exam of Kate's knee, followed by an ultrasound exam directly on the area of pain, using the SONIMAGE<sup>®</sup> HS1 Compact Ultrasound System. With the system's superior imaging capability, broadband frequency range of the L18-4 transducer, and ease of use, Kate's physician was able to make an accurate diagnosis at the point-of-care.

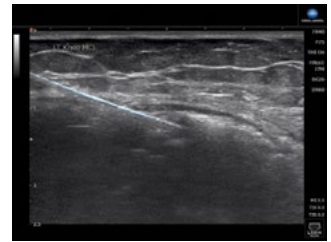
Portable ultrasound offers rapid, confident decisions at the bedside — possibly a great alternative to a more expensive and time-consuming MRI. Kate appreciated the convenience of having a complete and thorough examination and possible diagnosis, being one step closer to a rehabilitation program.



## Diagnosis

The patellar tendon was imaged in long and short axis with the use of a high-frequency linear transducer (18-4 MHz). The focal areas on the ultrasound image reflect as hypoechoic and anechoic signals, within hyperechoic fibular striations of normal collagen bundles.

The ultrasound revealed detailed spatial and lateral resolution within the tendon fibers, which reflect the expanded area with loss of demarcation of the collagen bundles; therefore revealing a diagnosis of patellar tendinosis.



► *Needle visualization allows for accurate needle placement.*

Do more with ultrasound.  
Provide diagnoses and treatment  
more confidently at the point-of-care.



## Treatment

Treatment options may include:

- Sclerosant injections with ultrasound guidance
- Eccentric stretching
- Platelet-rich plasma (PRP) injections
- Surgical procedures for excision of the diseased tissue



## Reimbursement

Incorporating ultrasound into a practice as a primary diagnostic tool, prior to or instead of an MRI, can increase practice revenue. Accurate coding and billing for ultrasound examinations are important. Reimbursement guides provide general coverage and payment information for diagnostic ultrasound and ultrasound-guided procedures.

*See back panel for details regarding coding.*

# Reimbursement

**Maximize your investment while delivering high-quality care.**



## Reimbursement and Exam Coding

Submit CPT code 76882 for limited ultrasound exam of the knee.

Submit CPT code 76942 for needle guidance of fluid aspiration.

### Musculoskeletal Ultrasound and Procedural CPT Codes and Descriptions (2017)

CPT Code	Description	Non-Facility	Facility	Professional Payment	Technical Payment
<b>76881</b>	Ultrasound, extremity, nonvascular, real-time image documentation complete (MSK)	\$116.01	\$116.01	\$31.87	\$84.14
<b>76882</b>	Limited ultrasound, nonvascular, real-time image documentation complete (MSK)	\$36.52	\$36.52	\$25.06	\$11.46
<b>76942</b>	Ultra guidance for needle placement (e.g., biopsy, aspiration, injection, localization device), imaging supervision and interpretation	\$61.58	\$61.58	\$34.01	\$27.57

Konica Minolta provides training support to help you incorporate ultrasound into your practice and maximize your investment.

**Request a Demo and Learn More**

Visit: [bit.ly/KMUSoundDemo](http://bit.ly/KMUSoundDemo)

© 2017 Konica Minolta Healthcare Americas, Inc.



KONICA MINOLTA

Konica Minolta Healthcare Americas, Inc.  
411 Newark Pompton Turnpike  
Wayne, New Jersey 07470  
Tel: (973) 633-1500 Fax: (973) 523-7408  
[konicaminolta.com/medicalusa](http://konicaminolta.com/medicalusa)

Ultrasound Patient Journey Brief  
M1202917 RevA