

SD-Q2 Thermal Processing Film. Optimal image quality for all imaging modalities.



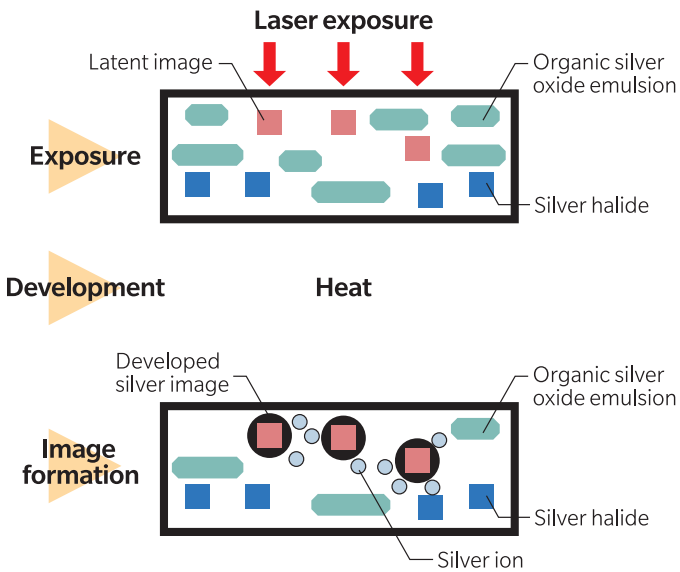
SD-Q2 delivers excellent diagnostic imaging clarity

- Designed for linear gradations, through low and high density areas
- Optimized image tone control for CR, DR, MRI, CT and other modalities, ensures sharp, clear images
- Available in multiple sizes in daylight safe packaging for the DRYPRO 873/ 832. Sizes include: 14"x17", 14"x14", 11"x14", 10"x12" and 8"x10". All sizes are 125 sheets per box

Imaging film that delivers sharp, clear images.

Dry film image formation

1. A latent image is recorded in the silver halide of the film by laser exposure
2. During thermal development, silver ions are supplied to the latent image from organic silver oxide emulsions, causing the developed silver image to appear



Storage and handling conditions for SD-Q2 dry film

Medical Imaging Film SD-Q2 is a dry film requiring no wet processing. It should be stored and handled with care.

1. Storage and handling of unexposed film

- As with other types of film, unexposed dry film should be stored in a cool, dry and dark place (Recommended temperature: 10~25°C) in the original packaging and protected from radiation
- To prevent condensation, bring the product to room temperature before use

2. Storage and handling of processed film

- Thermally processed film may be affected by high temperatures and strong light, even after processing. To protect images, the film should be stored in a cool, dry and dark place. For long-term storage, film can be inserted into the original packaging or other protective envelopes and stored at 25°C or below. Storage at high temperatures may result in increased density and discoloration
- Density variations and discoloration may result if the film is stored at temperatures of 40°C or above. The film should not be left in a closed car in hot daylight conditions, and should not be viewed with overhead slide projectors and other heat emitting devices
- Since film may be affected by direct light as well as high temperatures, the film should not be exposed to direct sunlight or left mounted on the viewing box for extended periods of time
- Dry film should not be cleaned with alcohol, cleaning agents and water that may cause density blotching and other defects. Film should not be handled with wet hands
- Dry film may stick together if stored in a highly humid environment

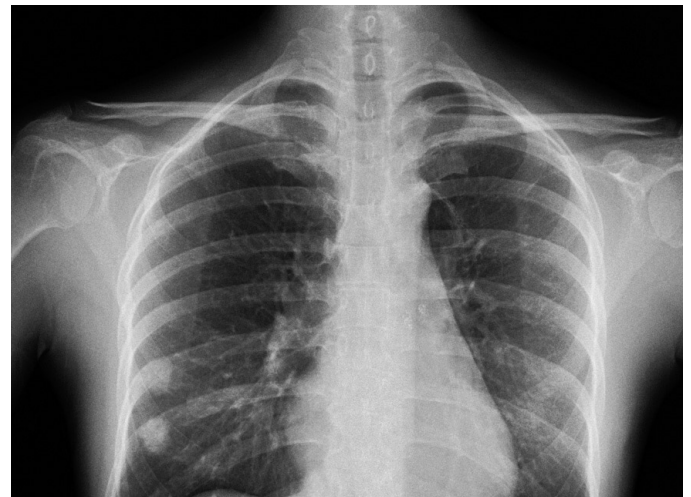


Image modalities: CT, MRI, DSA, RI, etc.



Konica Minolta medical film is manufactured with a quality management system that has been certified to be in compliance with the ISO 13485:2016, and the ISO 9001:2015 quality management standards, as well as with the REGULATION(EU) 2017/745 on Medical Devices.
© 2022 Konica Minolta Healthcare Americas, Inc.