

View Orthopedic Images Where Needed, Securely and Quickly.



Exa® Ortho PACS provides a platform for orthopedic surgeons to access images from the operating room, exam room or office to share with patients. With a diagnostic Zero Footprint Viewer, you can view images from any web enabled device, including smartphones and tablets.

Zero Footprint Viewer—No Downloads Necessary. Instant Access, Anywhere, from Any Device

Exa's true **Zero Footprint (ZFP) viewer** offers full diagnostic toolsets with immediate viewing capabilities from any PC, OS (including MacOS), tablet or smartphone without any application installations, downloads or plugins. IT staff can manage everything remotely: no more traveling from site to site installing software.



Server-Side Rendering

Rapid Access to images. Images do not need to be transmitted to each workstation because our Server-side Rendering (SSR) allows you to access everything directly on the server. Prior studies are immediately available

Cybersecurity

With no data transferred to or stored on workstations, Exa Ortho minimizes unwanted exposure to patient data. Since Exa Ortho is web-enabled, images can be viewed from any location. No more transporting CDs to the operating room.

Orthopedic Toolset

Exa Ortho offers a full range of precise measuring tools and related features available at all PCs. These include distance, angle and Cobb angle measurements as well as spine labeling. Our sophisticated image viewer also provides a comprehensive selection of standard tools, such as window/level, zoom and magnify.

Bone Enhancement

Bone Enhancement tool offers improved image quality for overweight patients and under-penetrated images.

Case Management Tools

Tools for surgical planning and exam follow up.

Customized Orthopedic Workflows

- **Categorization:** Custom study flags can be used to categorize studies based on specific criteria, such as the type of orthopedic condition (e.g., Fractures, Joint Replacements) or a physician's workflow (e.g., Dr. Smith's Upcoming Surgeries)
- **Workflow Efficiency:** Custom study statuses and automation tools can help streamline workflow by allowing healthcare professionals to quickly identify which studies require immediate action or further review and which cases have been or still need to be reviewed. This can lead to faster diagnoses and treatment decisions.
- **Prioritization of Cases:** Custom STAT levels can be applied to studies and automatically prioritized on the worklist. For instance, urgent or high-priority cases can be flagged for immediate attention, ensuring that critical diagnoses and follow ups are not delayed.

Identification of Key Images

- **Identification of Critical Images:** Orthopedic surgeons can mark specific images that are crucial for diagnosis, surgical planning, or follow-up evaluations. These specifically marked images can be quickly and easily pulled up within a patient's study to save time when reviewing cases.

- **Surgical Planning:** Orthopedic surgeons can use marked key images to plan surgical procedures more efficiently. For example, they may highlight images that show the exact location of a fracture or joint abnormality that requires attention during surgery.
- **Enhanced Communication:** Marked key images facilitate better communication among healthcare professionals. Surgeons can share these images with colleagues, making it easier to discuss cases, seek second opinions, or collaborate on complex procedures.

Orthopedic Planning by Materialise OrthoView

Materialise OrthoView is the **complete** orthopedic pre-operative planning solution for the whole orthopedic practice with smart tools for fast and reliable results.

Complete solution for joint replacement, trauma, osteotomy, spine, and pediatric procedures with a cloud-based template library with over 220,000 intelligent templates which are always up to date.

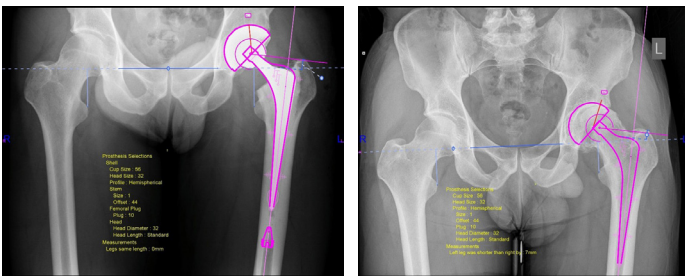
Smart, automated tools with automatic scaling and template positioning. Additionally, only compatible template sizes and options can be selected preventing incompatible implant selection.

Plan a procedure with multiple implants, customizable tools, and reports. Plans can be saved to Exa Ortho or locally for reworking or referencing during surgery and can be shared with colleagues.

Validated tools and results which can provide accuracy of 96% for hip replacement within 1 size of the final implant. [Please use link for data.](https://www.materialise.com/en/inspiration/articles/templating-software-predict-implant-sizes)

<https://www.materialise.com/en/inspiration/articles/templating-software-predict-implant-sizes>

Broad educational offering with self-learning articles, video tutorials and webinars freely accessible through Materialise OrthoView Academy, with remote and onsite training courses available.



OrthoView Templating

EHR Integration

Exa Ortho will integrate seamlessly with electronic health record (EHR) applications to import full patient demographic information, eliminating duplicate data input issues. Additionally, images from completed exams are available to view within the EHR.

Custom Workflow Design Engine

The order of operations for an imaging study can vary drastically from business to business. Build your workflow based on your facility's needs. The ability to define the entire process step-by-step allows for the most efficient and productive procedure. Choose from the drag and drop status options or create your own custom status to design your preferred imaging workflow. Workflow design options include automating workflow based on timing needs, automating actions between statuses, such as HL7 messages and routing rules, and triggering customized email messages to providers.

Performance Dashboards

Increase accountability with performance dashboards. Track performance metrics and workload in real time with an easy-to-read dashboard. Track information such as study count by orthopedic surgeon, study count by modality by referring physician, study count year over year and modality room study count.

Cloud and On Premises

Konica Minolta will host your Exa Ortho application and database in our SOC 2 compliant data centers. As your business grows, it can be challenging to keep up with the evolving constraints on storage space, memory and CPU usage, and operating systems constantly being updated. Konica Minolta manages these for you.

Konica Minolta can provide a server solution for Exa Ortho or specifications for customers to source your own server. We review your annual exam volume, modalities, user roles and usage to determine the right solution for your business.

World Class Customer Service

A dedicated project team is assigned with a project manager that will quarterback the entire implementation process through go-live and transition to customer support. Everything required for a successful implementation is provided including systems engineers, integration engineers and applications specialists.

The Call Center is available for all customers and can be contacted via phone or our customer portal. The customer portal provides an extensive knowledge base for self-service and case creation that's part of our Customer Relationship Management (CRM) solution. Behind the scenes are applications and engineering experts ready to serve customers 24/7/365.



Our journey in imaging innovation started **150 years** ago, with a vision to see and do things differently. We innovate for the good of society and the world. That same purpose that kept us moving then, keeps us moving now.

Learn more about **Konica Minolta Healthcare IT solutions** at healthcare.konicaminolta.us, or scan the QR code.



© 2023 Konica Minolta Healthcare Americas, Inc. M2161 0923 RevA



Konica Minolta Healthcare Americas, Inc.
411 Newark Pompton Turnpike
Wayne, New Jersey 07470
Tel: +1 (973) 633-1500
km.marketing@konicaminolta.com
healthcare.konicaminolta.us

