

# HIGH PERFORMANCE, WIRELESS DIGITAL DETECTORS ALWAYS READY TO GO.



## HIGH-PERFORMANCE TECHNOLOGY

The AeroDR® family of high-performance wireless digital detectors are the lightest, strongest, and most sensible solution to improve efficiency while delivering high image quality.



## AEROLINK FUNCTION

Enables connection between the console and AeroDR detector, making a simple configuration possible without an external Access Point.



## INTEGRATED CONSOLE

Two-in-one laptop/tablet combined with REALISM Image Processing Engine developed to maximize the image quality performance of AeroDR with high-resolution pixels and high DQE.

## FAST, EASY AND PORTABLE

AeroDR® portable upgrades bring high quality digital imaging to any clinical setting.

Transform your facility's imaging capabilities with the AeroDR portable upgrade solution, featuring high-performance, lightweight detectors that seamlessly convert any clinical analog setting into an up-to-date DR solution within seconds. Designed for versatility, this solution is ideal for use in hospitals, clinics and remote medical environments, offering unparalleled portability for convenient hand-carrying to patients in any clinical setting.

# Portability and advanced features that lead to improved operational efficiency.

**This compact solution ensures high-quality digital imaging, contributing to optimized workflow efficiency, increased patient throughput, and an enhanced overall diagnostic experience. It improves patient care by providing reliable and simple on-the-go imaging capabilities.**

**Enhanced Workflow Efficiency:** The combination of lightweight portability and high-performance detectors streamlines the imaging process and enhances patient throughput, allowing for quicker and more efficient patient examinations, minimizing waiting times, and optimizing overall operational efficiency.

**Optimized Image Quality and Low Dose:** High DQE and REALISM image processing deliver a new level of clarity and detail for superior visualization within soft tissue and bone structures optimizing image quality while using low doses for enhanced patient safety and reduced radiation exposure.

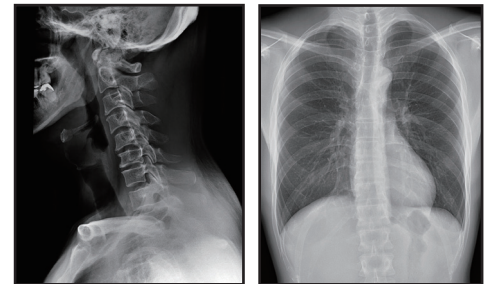
**Cost-Effective Reliability and Durability:** AeroDR detectors built with Lithium-Ion capacitors, quick charging, and a 7-year warranty, ensure cost-effective reliability. IP56 resistance minimizes maintenance costs, and military-tested ruggedness ensures durability—resulting in overall cost savings.

**Adaptable Point-of-Care Imaging:** Our solution's portability and versatility adapt to various settings, providing flexible point-of-care imaging directly to patients. This includes bedside, emergency, trauma situations, mobile clinics, and remote healthcare facilities.

**Expanded Diagnostic Capabilities:** Offering the latest advancements for your existing X-ray system. Suitable for portable retrofits, it expands in-room retrofit capabilities by adding an optional accessories package, monitor, dock station, and keyboard.

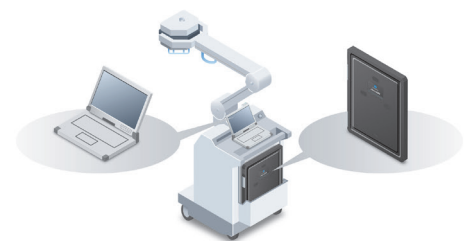


The AeroDR family of detectors

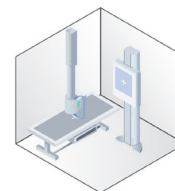


Images captured with REALISM Image Processing Engine

## PORTABLE RETROFIT



## IN-ROOM RETROFIT



Optional accessory package for in-room retrofit



Dock station for laptop



**For more information about these products, please contact your Konica Minolta Sales Representative.**

© 2024 Konica Minolta Healthcare Americas, Inc.



**Konica Minolta Healthcare Americas, Inc.**  
411 Newark Pompton Turnpike  
Wayne, New Jersey 07470  
Tel: +1 (973) 633-1500  
km.marketing@konicaminolta.com  
[healthcare.konicaminolta.us](http://healthcare.konicaminolta.us)

M2254 0124 RevA