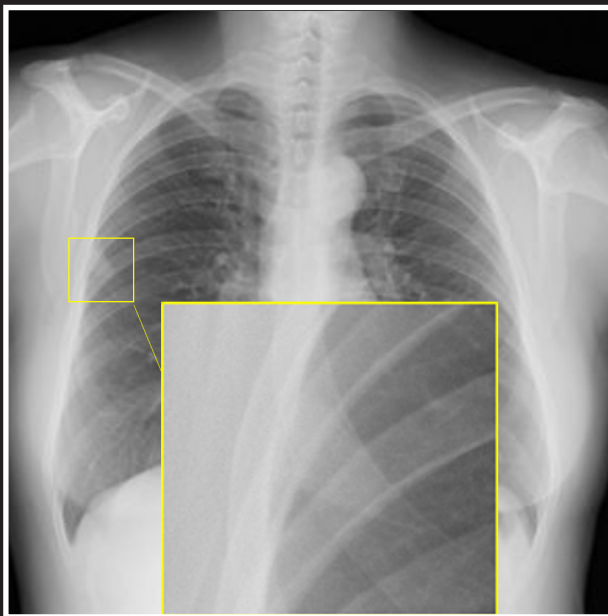
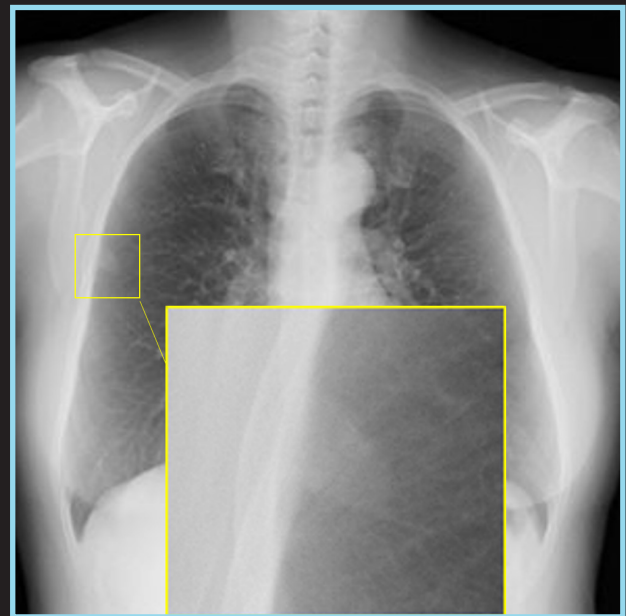


Enhance Chest X-ray Visibility and Streamline Diagnostics



Original PA Chest Image



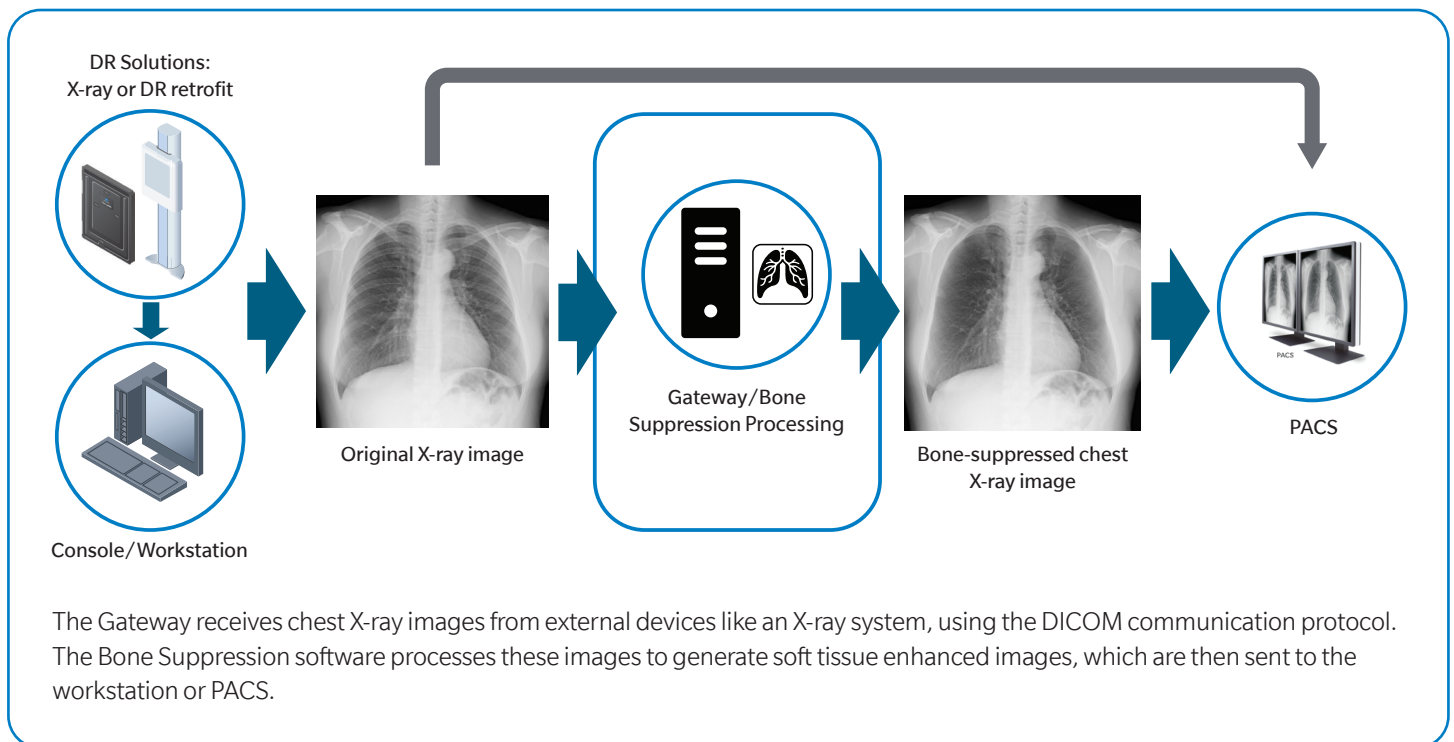
Bone Suppressed Image

Experience enhanced soft tissue visibility with bone signals suppressed in chest X-rays. Seamlessly integrating with existing X-ray systems, **Bone Suppression Imaging (BSI)** reveals hidden details of soft tissue and organs, improving the visualization of subtle lung abnormalities. This enhancement streamlines and elevates diagnostic clarity, enabling radiologists to read more exams per day by reducing overall reading time, deliver higher-quality results, and improve outcomes for both patients and healthcare providers.

Optimize Your Diagnostic Workflow—Discover Bone Suppression Imaging Today

Bone Suppression Imaging (BSI) delivers significant clinical and operational advantages:

- **Enhanced image clarity:** Improves visualization of subtle abnormalities, allowing for earlier identification of pathologies leading to clearer diagnoses and better patient outcomes.
- **Increased efficiency:** Streamlines diagnostic processes and integrates seamlessly into existing systems, resulting in faster turn around times and more effective resource utilization. Enhances overall operational performance and workflow efficiency.



The stand-alone solution, compatible with Konica Minolta X-ray systems and other existing X-ray systems, includes two components for optimizing imaging clarity and system integration:

- **Bone Suppression Imaging (BSI) software:** attenuates the anterior ribs, posterior ribs, and clavicles in PA chest images, enhancing the visibility of lesions overlapping with bones in the pulmonary field and improving chest interpretation.
- **Gateway:** manages both the Bone Suppression processing software and image transmission from multiple X-ray systems to PACS. It supports connectivity with up to 100 input channels and can be expanded with additional hardware as needed.

For more information about these products, please contact your Konica Minolta Sales Representative.

© 2024 Konica Minolta Healthcare Americas, Inc.



Konica Minolta Healthcare Americas, Inc.
411 Newark Pompton Turnpike
Wayne, New Jersey 07470
Tel: +1 (973) 633-1500
km.marketing@konicaminolta.com
healthcare.konicaminolta.us

M2289 0924 RevA